



3 Quayside Mews, Lymm, Cheshire, WA13 0HZ  
£1,750 PCM



3 Quayside Mews, Lymm, Cheshire, WA13 0HZ

£1,750 PCM

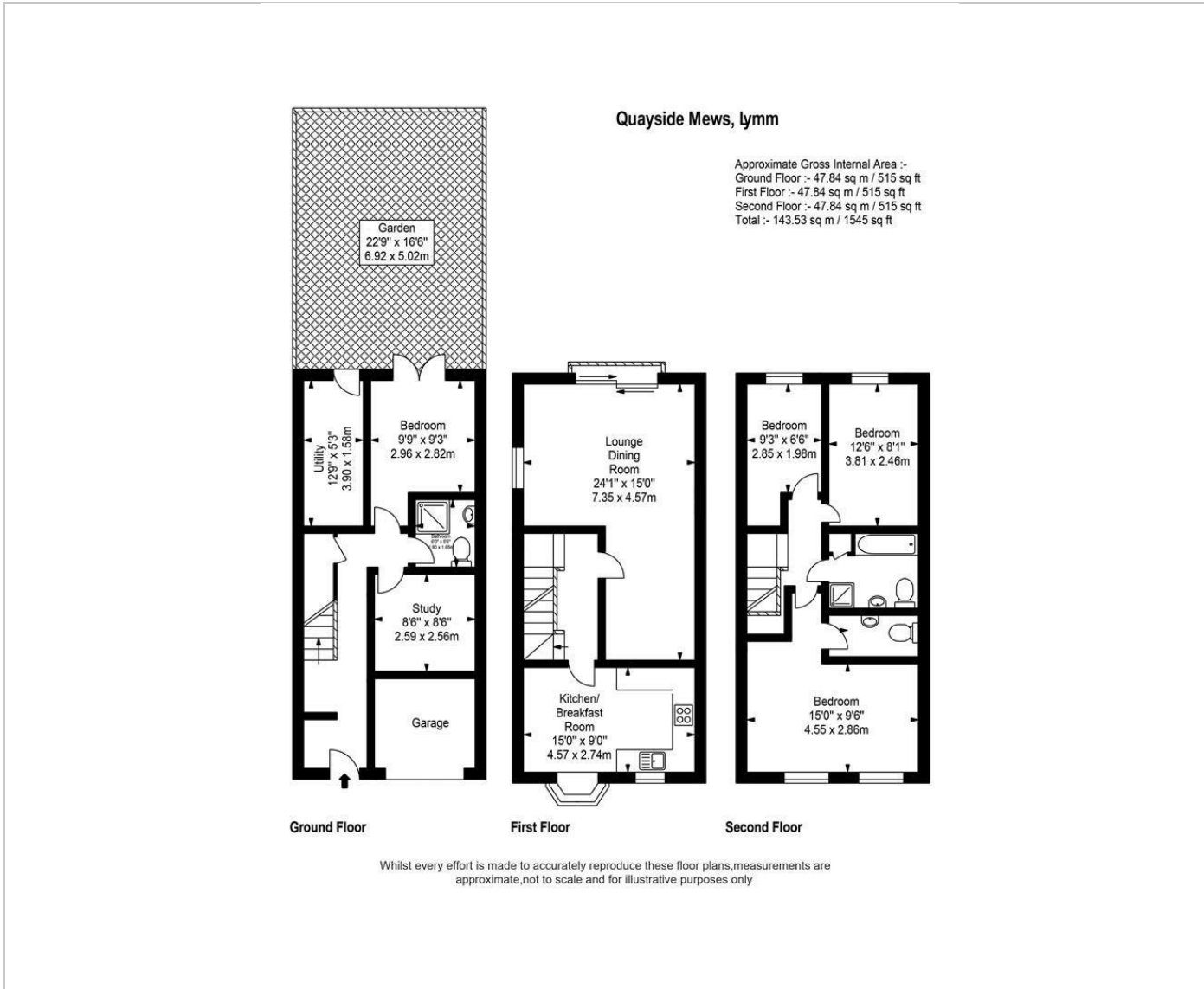
Fabulous townhouse close to Lymm Village Centre and the Bridgewater Canal. Well presented and offering flexible family accommodation over three floors to include, hall, utility room, bedroom four, shower room, study and store. To the first floor there is a modern dining kitchen and lounge/living room which is not overlooked. There are three bedrooms, one with ensuite on the second floor together with a family bathroom. Courtyard at rear and parking to the front.

Description

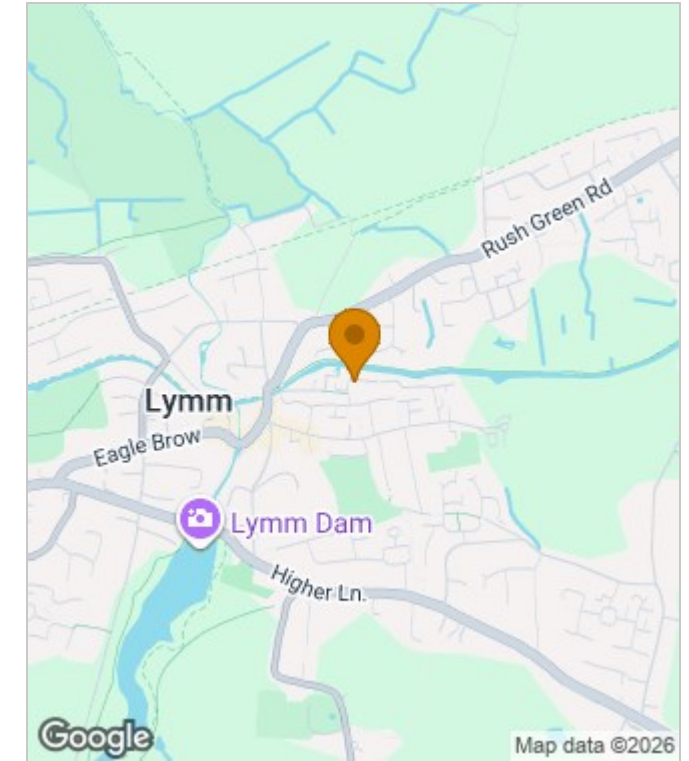


Council Tax Band: E

## Floor Plans



## Area Map



## Energy Performance Graph

Energy Efficiency Rating		Current	Potential
Very energy efficient - lower running costs			
(92 plus) <b>A</b>			
(81-91) <b>B</b>			
(69-80) <b>C</b>			
(55-68) <b>D</b>			
(39-54) <b>E</b>			
(21-38) <b>F</b>			
(1-20) <b>G</b>			
Not energy efficient - higher running costs			
<b>England &amp; Wales</b>	EU Directive 2002/91/EC		

These particulars, whilst believed to be accurate are set out as a general outline only for guidance and do not constitute any part of an offer or contract. Intending purchasers should not rely on them as statements of representation of fact, but must satisfy themselves by inspection or otherwise as to their accuracy. No person in this firm's employment has the authority to make or give any representation or warranty in respect of the property.